

# **Visit Resource for Teachers** **“Aha! Discovery and Empathy in Action”**

National Museum of Korea  
**CHILDREN'S  
MUSEUM**

## Let's find out about the Children's Museum at the National Museum of Korea.

**CHILDREN'S MUSEUM** is an experience-oriented museum where children can use their eyes, hands, and hearts as play and take part in experiential activities.



### Enjoy it together with all your family members!

The museum is a space where children and adults can enjoy a wide variety of play-based experiences together.

### Discover history and culture!

The museum is a space that inspires children to take an interest in Korean history and culture.

### See cultural heritage from a new perspective!

The museum is a space where children can develop their curiosity and imagination while exploring diverse cultural heritage items.

### Share thoughts and feelings!

The museum is a space where children can freely share their ideas and emotions.

## How to use this resource

### Before your visit

01

Advance information about the Children's Museum.

### During your visit

02~05

Explore and talk about the cultural heritage in the Aha! Discovery and Empathy in Action exhibition gallery.

### After your visit

06~10

Show what you learned about cultural heritage at the Children's Museum through diverse activities.

### Do you need information about group visits?



Please check the group visit information guide.

### Do you want to know about the exhibitions at the museum?



Please check the information on the permanent and special exhibitions.

### Do you want to know about the educational programs at the museum?



Explore the diverse educational programs that the museum offers for children, families, educational institutions, and groups.

### Do you need access to any of the resources provided by the museum?



Discover resources related to the exhibitions and educational programs at the museum.

# Must-experience activities at Aha! Discovery and Empathy in Action

## Part I. Constellations

Match with follow up activity on pg. 08

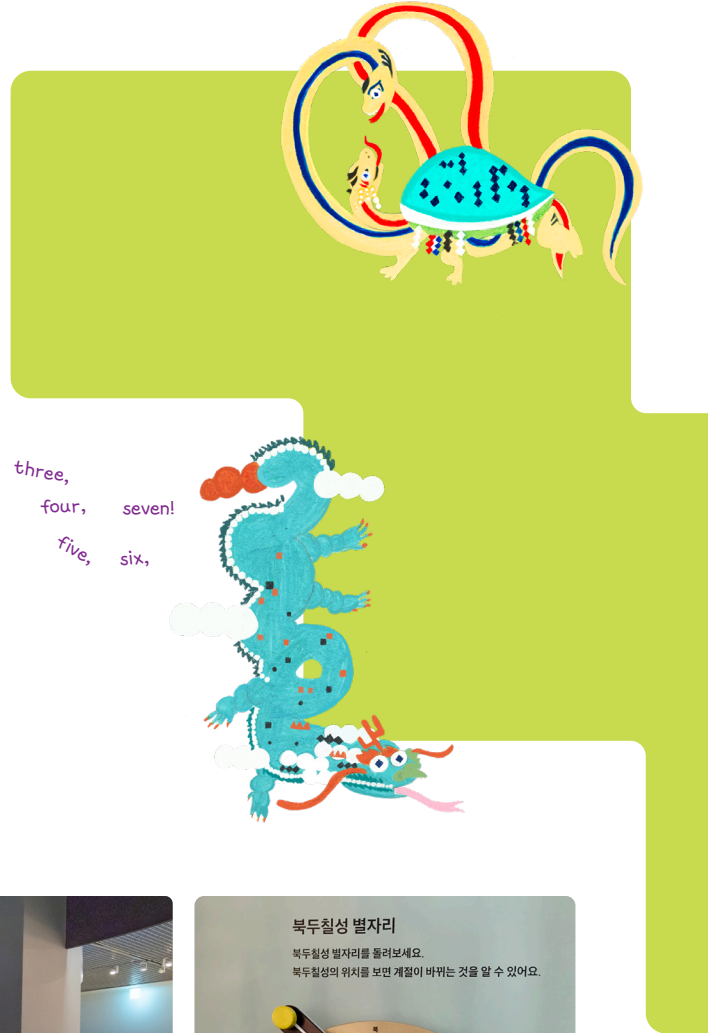
Go up to the second floor and take a look at the constellations shining in the night sky. What animals do you see under your feet?

There is a dragon in the East, a tiger in the West, a bird in the South, and a tortoise in the North.

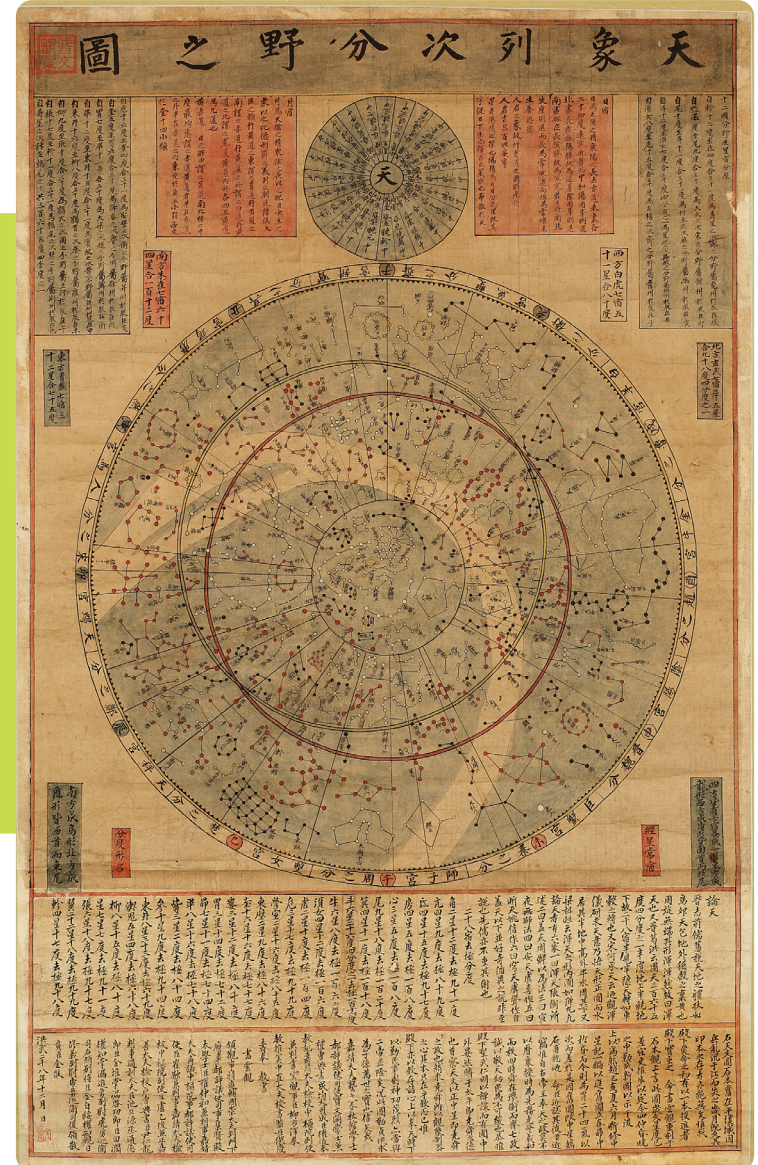
If you look to the side, you can see stars moving on the ceiling. Let's count how many stars there are.

Seven stars form the constellation the Big Dipper. When you observe the Big Dipper, you can see the changes over time and with the seasons.

There are other constellations next to the Big Dipper. Go closer and take a look at them.



Constellations Chart  
Joseon Dynasty | Gallery



## Must-experience activities at Aha! Discovery and Empathy in Action

### Part II. Kiln for Firing Ceramics

Match with follow up activity on pg. 09

#### Let's take a look at the kiln in front of us. What does a kiln do?

A kiln is a device that is heated to make clay vessels hard and glossy.

#### What do you see inside the kiln?

There are a wide variety of vessels large and small. They are blue and white in color, and both rough and glossy in texture.

#### What would it take to complete the vessels here?

If you burn firewood in a kiln that is filled with clay vessels, the heat will harden them.

#### Who would like to volunteer to come out and try loading firewood into the kiln?

Try putting in one piece of firewood, and then insert all eight pieces.

#### How does it change?

The more firewood you put in, the hotter the temperature of the kiln grows. You can produce ceramics of various colors.



Rice bale-shaped Bottle with Fish  
Buncheong ware with incised design  
Buncheong Ware and  
White Porcelain Gallery  
Sculpture and Crafts Section



Comb-pattern  
Pottery  
Neolithic Period  
Gallery



Celadon Jar with Inlaid  
Peony Design  
Celadon Gallery  
Sculpture and Crafts  
Section



Part II Permanent Exhibition Gallery

## Must-experience activities at Aha! Discovery and Empathy in Action

### Part II. Cogwheel

Take a look at the wheels in front of us. The form of the wheels is interesting! What do they look like?

They are notched. Wheels in this shape are called cogwheels.



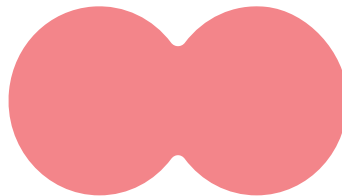
Why do they have teeth around the rim?

Cogwheels transmit motion. Try connecting the wheels one by one. You can make multiple wheels turn just by rotating one of them.

Shall we try connecting the cogwheels and rotating them?



Wheeled Cups



### Part II. Pulley

There is another type of wheel that works like a cogwheel. Let's count how many wheels are connected to this long string.

One, two, three, four, five, six!  
There are six wheels.



Do you think we can use the wheels to lift heavy bricks?

Yes, if we use wheels and string, then we can lift heavy stones much more easily.

This type of wheel that reduces the power needed to lift loads is called a pulley.

Who would like to volunteer to try lifting a brick using just two pulleys?  
What is the difference between lifting it using six pulleys?

Ah! The more pulley wheels, the lighter the rock feels.



Medicine Mortar  
Joseon Dynasty III  
Gallery



# Must-experience activities at Aha! Discovery and Empathy in Action

## Part III. Metal Type Printing Office

Match with follow up activity on pg. 10

The square blocks with characters carved on them are known as metal type. Shall we take a closer look at the characters on the type?

The characters on the pieces of type are backwards.

Why are the characters on the type backwards?

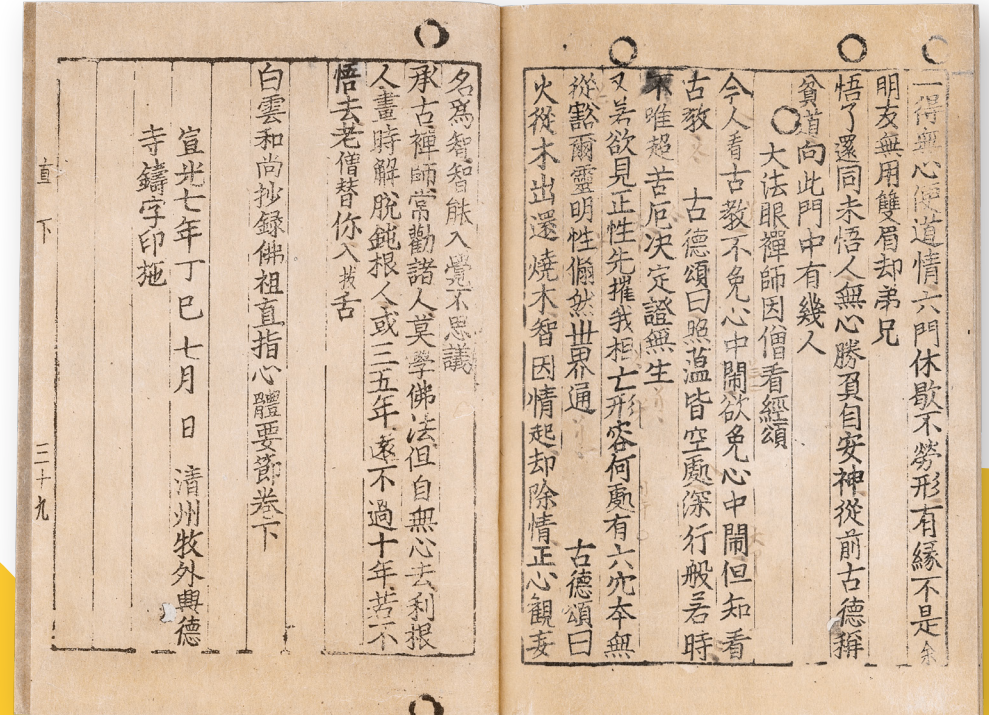
That way when you press the type onto paper the characters show the right way around.

Let's take turns making a sentence using type.

Let's read the completed sentence.

Take a look in the mirror next to you. The mirror image is what it will look like when it is printed.

\* Teachers, please assist children who haven't yet learned to read.



Part III Permanent Exhibition Gallery



Anthology of Great Buddhist Priests' Zen Teachings (reproduction)

After your visit

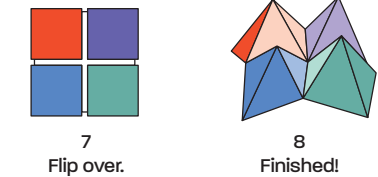
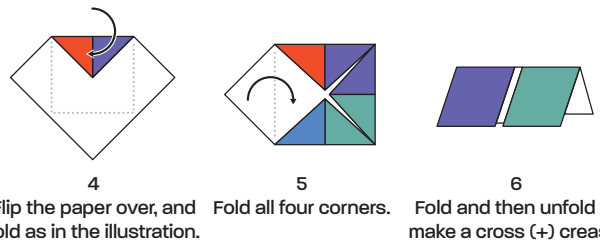
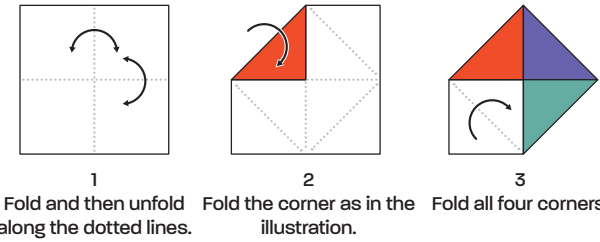
Follow up Activity:  
Aha! Discovery and Empathy in Action

**The East West South North Game**

Let's learn about the cultural heritage items that we saw at the Children's Museum by playing a game we call East West South North.

\* Teachers, please assist children who haven't yet learned to read.

- 1 Follow the instructions below to make the "East West South North" chatterbox.
- 2 Hold the completed chatterbox and call out the direction and number of your choice.  
Ex. East, two!
- 3 Open the chatterbox as many times as the number that was called out, and answer the question.



✂  
Cut along the line

<p><b>East</b></p>	<p>What color will a vessel become if it is fired at 1,200°C?</p>	<p>How many stars form the Big Dipper?</p>	<p><b>West</b></p>
<p>Can you tell your friends what you learned at the museum?</p>		<p>A sundial</p>	<p>What is a device for telling time using shadows?</p>
<p>Would it be easier to lift bricks with more pulley wheels?</p> <p>That's right, it is easier.</p>			<p>Which experiential activity was the most fun?</p>
<p><b>South</b></p>	<p>Ask a question of your choice to a friend.</p>	<p>Can you find something around you that has wheels?</p>	<p><b>North</b></p> <p>국립중앙박물관 어린이박물관 CHILDREN'S MUSEUM</p>

## After your visit

Follow up Activity: Aha! Discovery and Empathy in Action

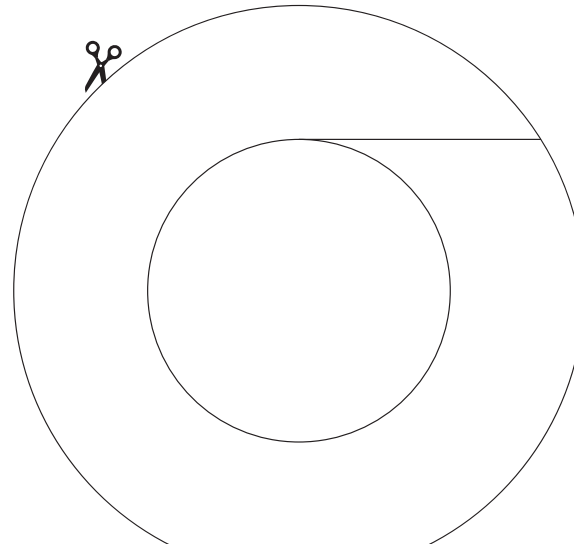
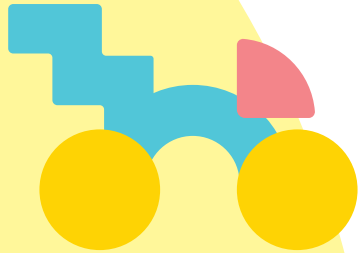
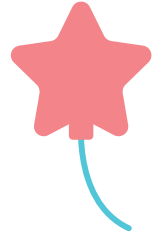
# Making an Observation Tool

What is there around you that makes you go "Aha!" through discovery and empathy?

What shapes do you see in the constellations of the night sky?  
What kind of wheels are there around you?

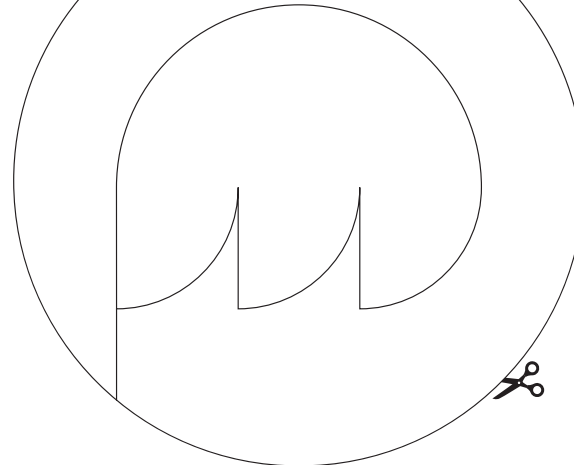
Make your own observation tool by cutting out the design.  
Use it to observe various objects around you!

\* It's better to use thicker, tougher papers.

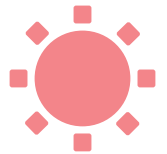


Aha! Discovery and Empathy in Action  
Observation Tool

Aha! Discovery and Empathy in Action  
Observation Tool



Aha! Discovery and Empathy in Action  
Observation Tool





After your visit

Follow up Activity: Aha! Discovery and Empathy in Action

Part I. Constellations

Seven stars together form the Big Dipper. The Big Dipper can be observed in the northern sky.

Let's make constellations by connecting the stars.



After your visit

Follow up Activity: Aha! Discovery and Empathy in Action

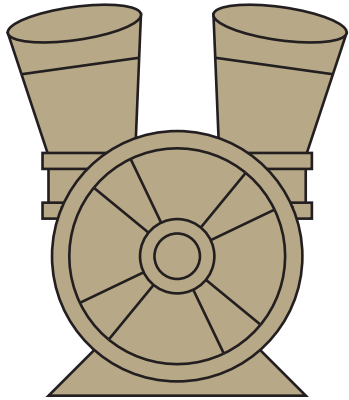
Part II. Kiln

What color will a vessel become when it is placed in a kiln?

The color of a vessel changes depending on the firing temperature in the kiln.

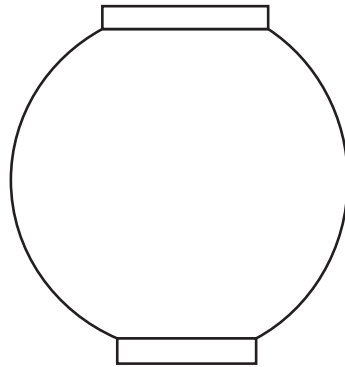


Wheeled Cups



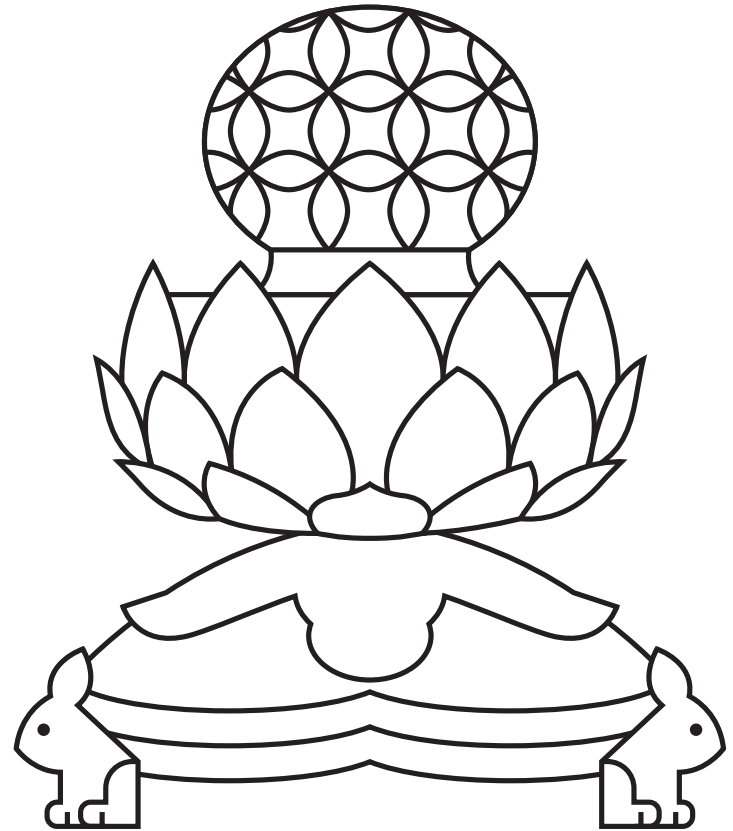
When fired at 1,000°C, an earth-colored vessel is produced.

White Porcelain Moon Jar



When fired at 1,300°C, a white color vessel is produced.

Celadon Incense Burner with Openwork



What color vessel did you see that is fired to 1,200°C? Provide your answer by coloring the vessel.

After your visit

Follow up Activity: Aha! Discovery and Empathy in Action

Part III. Metal Type

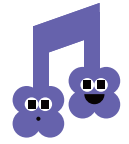
If you wrote characters in reverse and reflected them in a mirror, how would they look?

C	B	A
ㄷ	ㄴ	ㄱ
3	2	1



Write your name in the blank space, and see how the characters change in the mirror.

\* Teachers, please assist children who haven't yet learned to read.



Place a mirror here and read the characters.

A	B	C
가	나	다
1	2	3

**Supervision** Kwak Shin-sook  
**Planning** Park Yun-hee, Choi Sora  
**Text Editing** Lee Taehee  
**Design** nooNdesign  
**Translation** Jangtongbang

**Consultation** Haenurim Daycare Center at the National Museum of Korea  
 Seocho 2 Samsung Daycare Center  
**Published by** the Children's Museum Division  
 of the National Museum of Korea

This resource is an original work protected by the Copyright Act. Written permission must be obtained from the National Museum of Korea to use all or any part of this publication.